

Emma

Am I Not Enough?

Geraghty/Jarmy

♩ = 60



I did-n't think you'd e-ver see How did I think I'd keep this_ from



you? I thought we'd just go from here Turns out I was a lone in that too



Was what I saw real-ly re- al? Did he feel that way, all the way through?



This feels like the end_____ This feels like the end_____



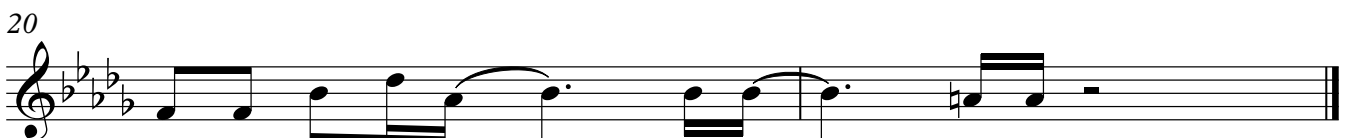
_____ The end of_ us The end of me_



I should have lis-tened to that voice_ Why is it that I feel likeI_am



less of my-self now Am I not e nough?_ Am I not e nough?_



Am I not e nough?_ for you_ my love?

Am I Not Enough?

Piano

Geraghty/Jarmy

$\text{♩} = 60$

Measures 1-3 of the piano score. The piece is in 4/4 time with a key signature of three flats (B-flat, E-flat, A-flat). The right hand features a series of chords and a melodic line, while the left hand plays a steady eighth-note accompaniment.

Measures 4-7. Measure 4 is marked with a '4' above the staff. The right hand continues with chords and a melodic line, and the left hand maintains the eighth-note accompaniment.

Measures 8-11. Measure 8 is marked with an '8' above the staff. The right hand continues with chords and a melodic line, and the left hand maintains the eighth-note accompaniment.

Measures 12-15. Measure 12 is marked with a '12' above the staff. The right hand continues with chords and a melodic line, and the left hand maintains the eighth-note accompaniment.

Measures 16-18. Measure 16 is marked with a '16' above the staff. The right hand continues with chords and a melodic line, and the left hand maintains the eighth-note accompaniment.

Measures 19-21. Measure 19 is marked with a '19' above the staff. The right hand continues with chords and a melodic line, and the left hand maintains the eighth-note accompaniment.